

# 647 Broadway

New York, NY 10012



METRO REALTY

WWW.MRNYS.COM

**ASKING PRICE: UPON REQUEST**



## SPACE AVAILABILITY

Space:	Mezzanine, Ste 2
Size:	1,800 SF
Term:	5 - 10 Years

## PROPERTY FACTS

Year Built:	1900
Rental Type:	All users considered
Space Use:	Office/Retail

## RETAIL SPACE AVAILABLE FOR LEASE

Welcome to 647 Broadway, a prestigious commercial space available for lease in the heart of New York City's vibrant SoHo neighborhood! This stunning space boasts an expansive open layout with plenty of natural light pouring in from large windows overlooking the bustling Broadway. With over 1,800 square feet of flexible space, half a floor walk-up, and a great signage opportunity, this property is perfect for any business looking to make a bold statement and thrive in a prime location! Whether you're starting a new business or expanding your existing one, this space has everything you need to succeed. With easy access to public transportation, world-class dining, and shopping, your business will be at the center of it all.

- Work & Live!
- Direct lease with easy terms!
- NEW Central Air Conditioning!
- Great signage opportunity facing Broadway!
- Free rent to Qualified Users.

# 647 Broadway

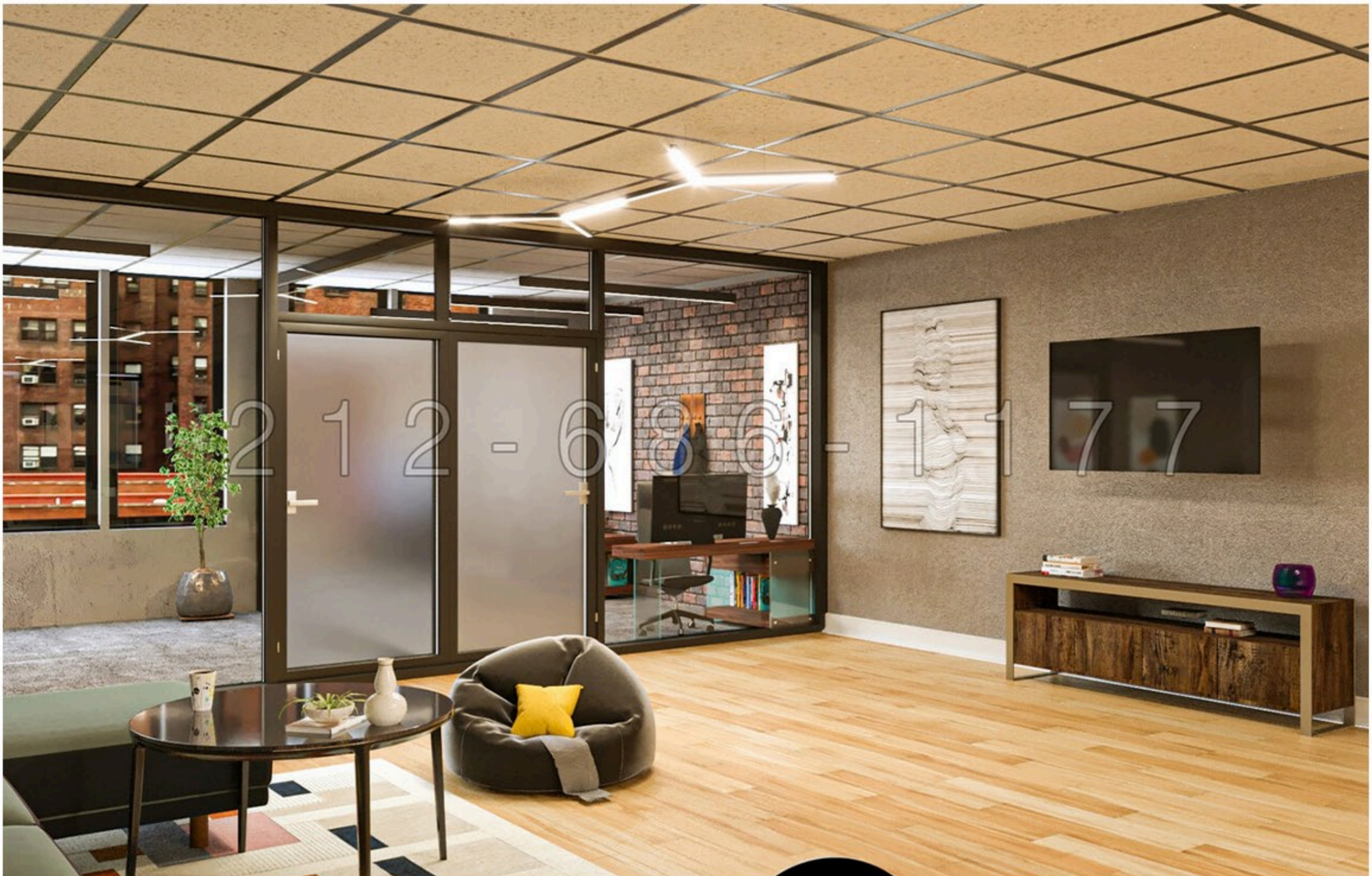
New York, NY 10012



METRO REALTY

WWW.MRNYS.COM

ASKING PRICE: UPON REQUEST



# 647 Broadway

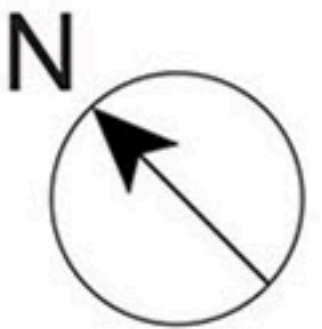
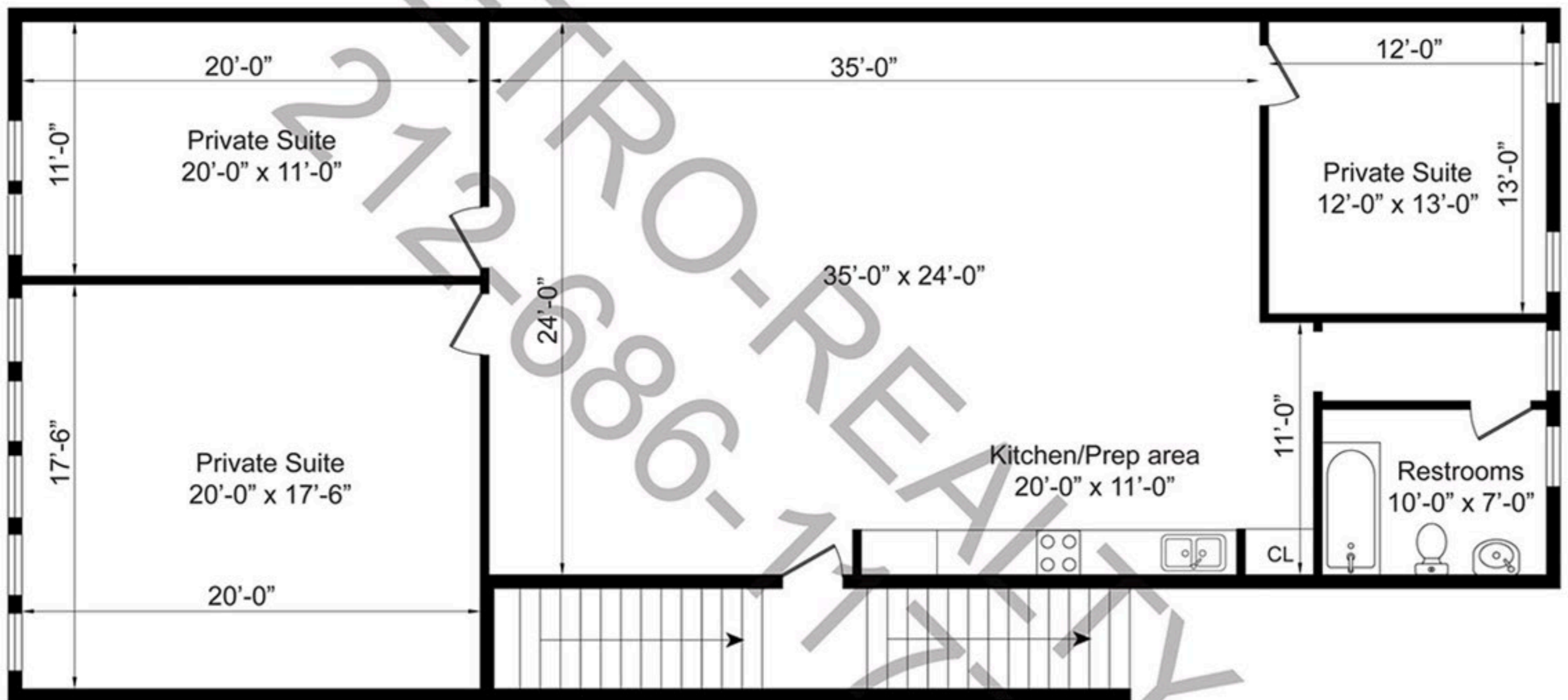
New York, NY 10012



METRO REALTY

WWW.MRNYS.COM

ASKING PRICE: UPON REQUEST



For more information, please contact Executive Agent:

Lior Lev  
Licensed Real Estate Broker  
(C) 212-777-7757 | Contact@mrnys.com